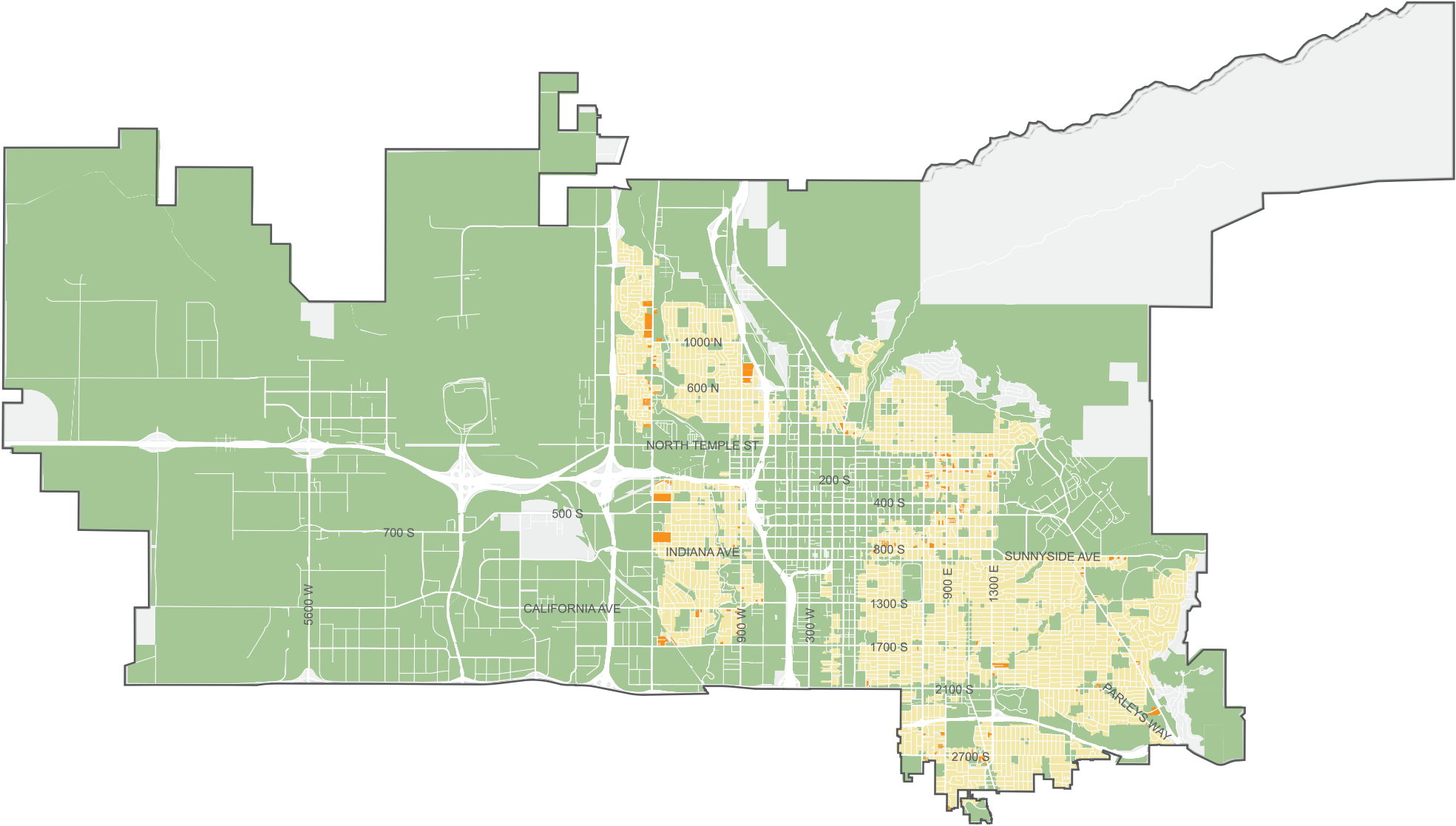


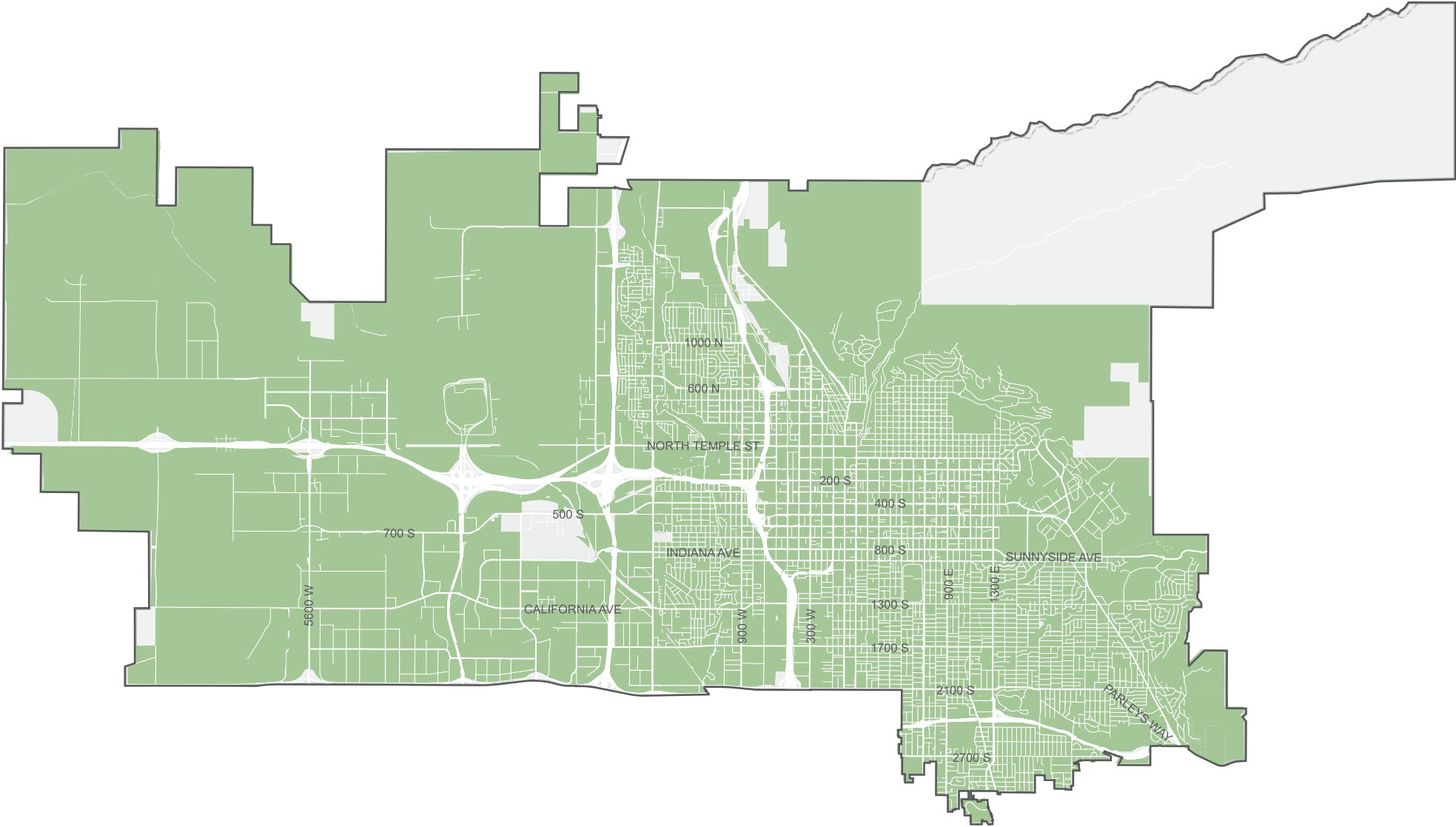
CHILD DAYCARE CENTER AMENDMENTS | EXISTING CONDITIONS



Permitted Use | Properties Eligible for Conditional Use | Residential Properties ineligible for Conditional Use | Not Permitted



CHILD DAYCARE CENTER AMENDMENTS | PROPOSED CONDITIONS



Permitted Use | Not Permitted

